

- - - Plan Area Boundary

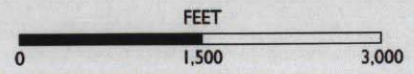
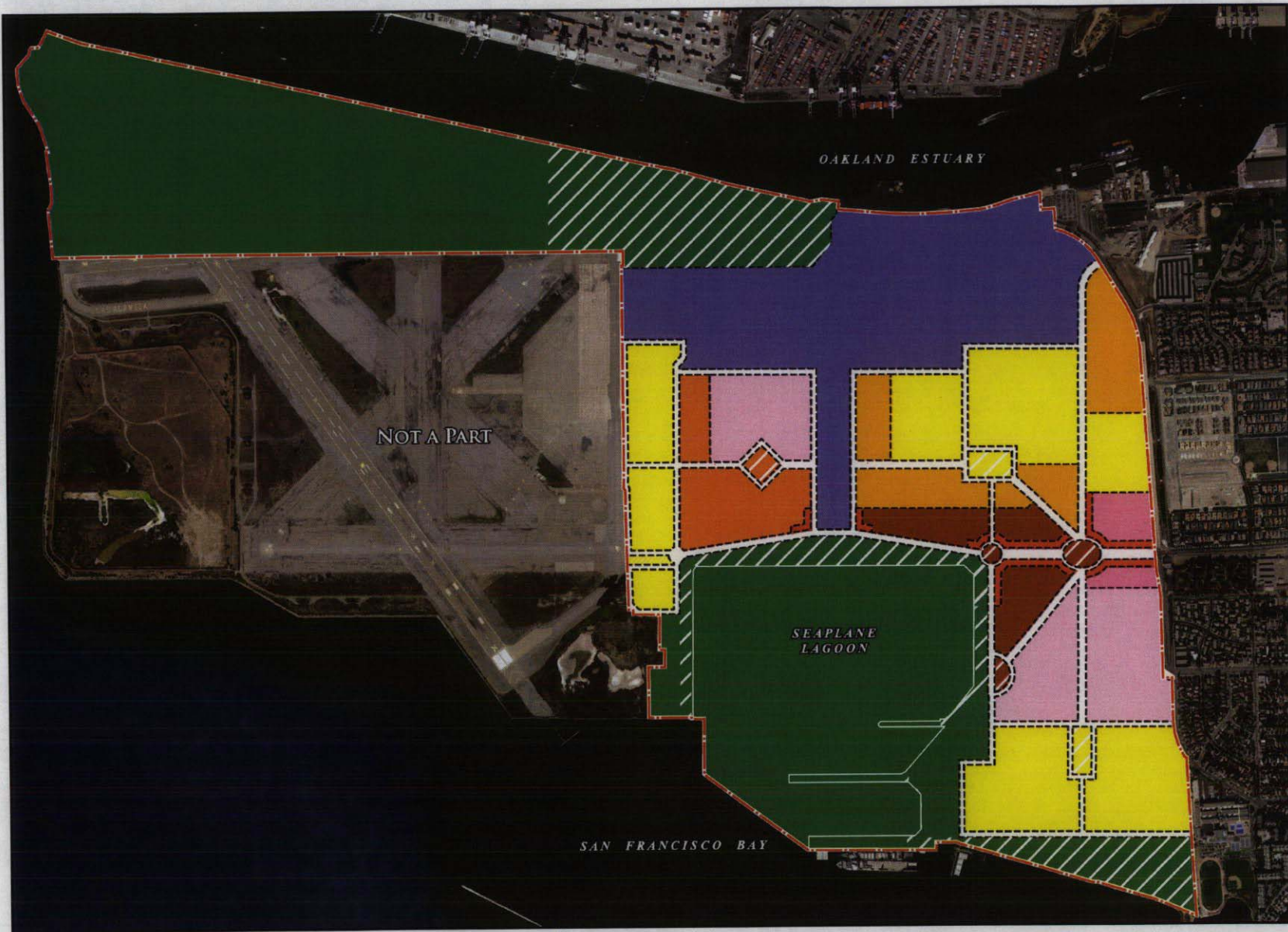


Figure 11-1
Alameda Point Plan Area





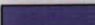






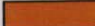

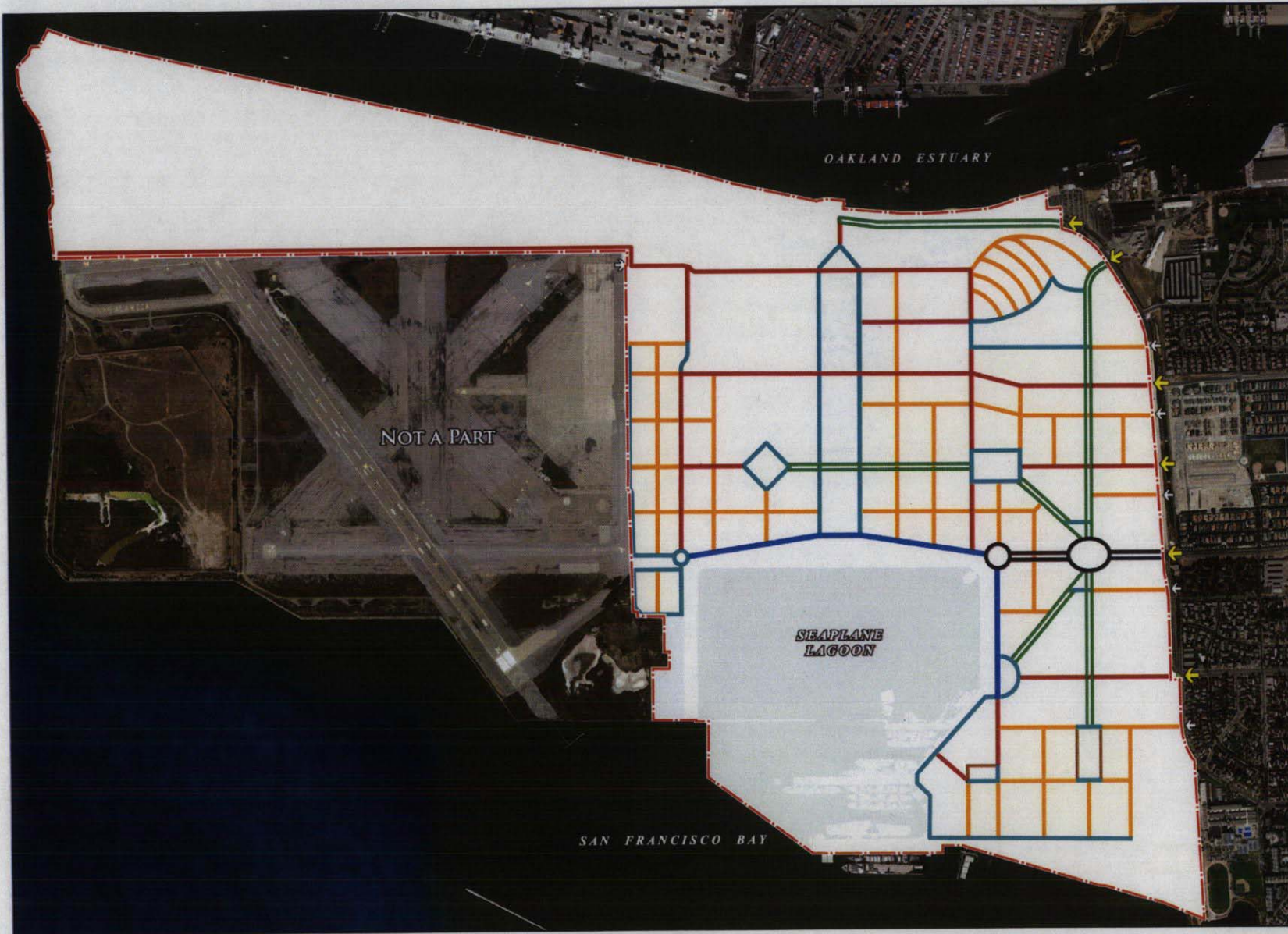
- | | | | |
|---|---------------------------------|---|------------------------|
|  | Plan Area Boundary |  | AP-BP: Business Park |
|  | AP-PMU: Preservation Mixed Use |  | AP-PT: Public Trust |
|  | AP-MU: Mixed Use |  | Ground Floor Retail |
|  | AP-RM: Residential Medium |  | Future Park Dedication |
|  | AP-RMH: Residential Medium High | | |
|  | AP-RH: Residential High | | |
|  | AP-C: Commercial | | |



Figure 11-2
Alameda Point General Plan Land Use

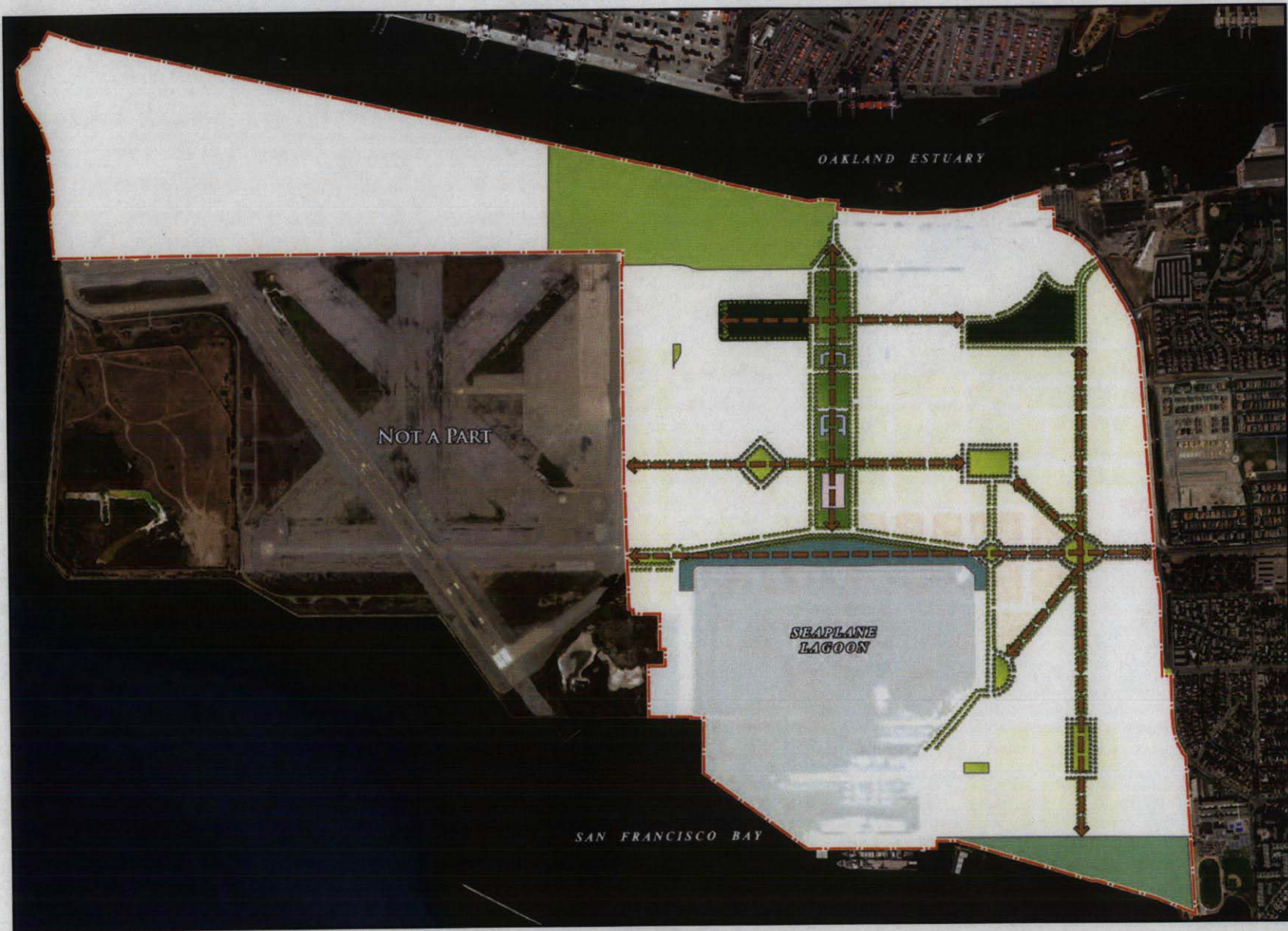


	Plan Area Boundary		West Atlantic Avenue	ROW	120'
	Primary Street Access		Typical Boulevard		86'
	Secondary Street Access		Waterfront Parkway		48'
			Connector Street		60'
			Local Street *		55'
			Connector Street at Open Space		50'
			One Way Local Street at Open Space		38'
			Alley		20'

* Roadway widths subject to revision in the Big Whites area



Figure 11-3
Alameda Point Circulation Plan



ILLUSTRATIVE






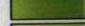
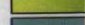



-  Plan Area Boundary
-  Sports Complex
-  Community Park
-  Linear Park
-  Neighborhood Park
-  Seaplane Lagoon Waterfront Park
-  Regional Park
-  View Corridor

Figure 11-4
Alameda Point Parks And Open Space

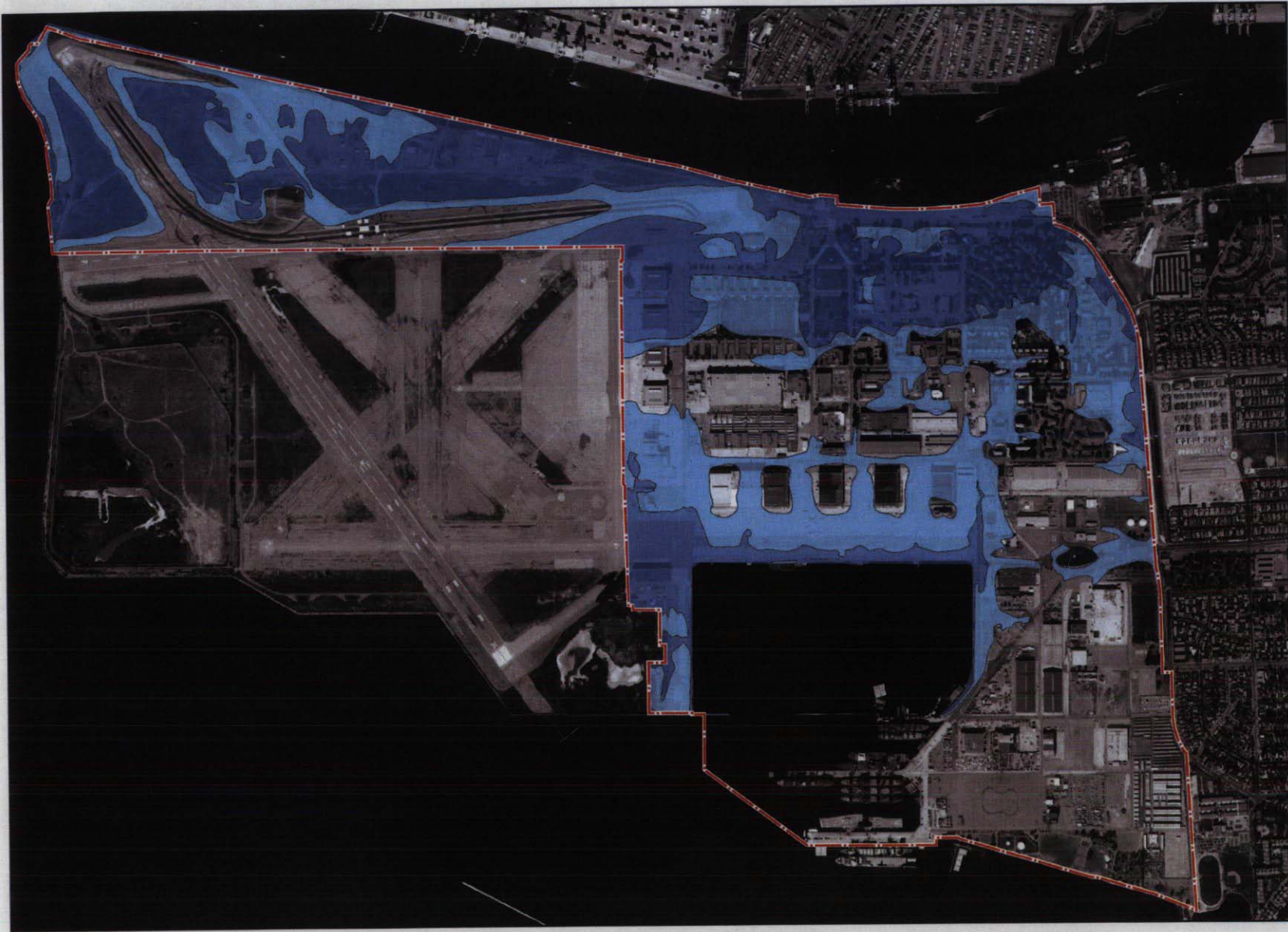


- Contributing buildings proposed to remain
- Other buildings proposed to remain
- Contributing buildings may be removed
- AP-Preservation Mixed Use district
- Current local historic district

0 800 1,600
 FEET



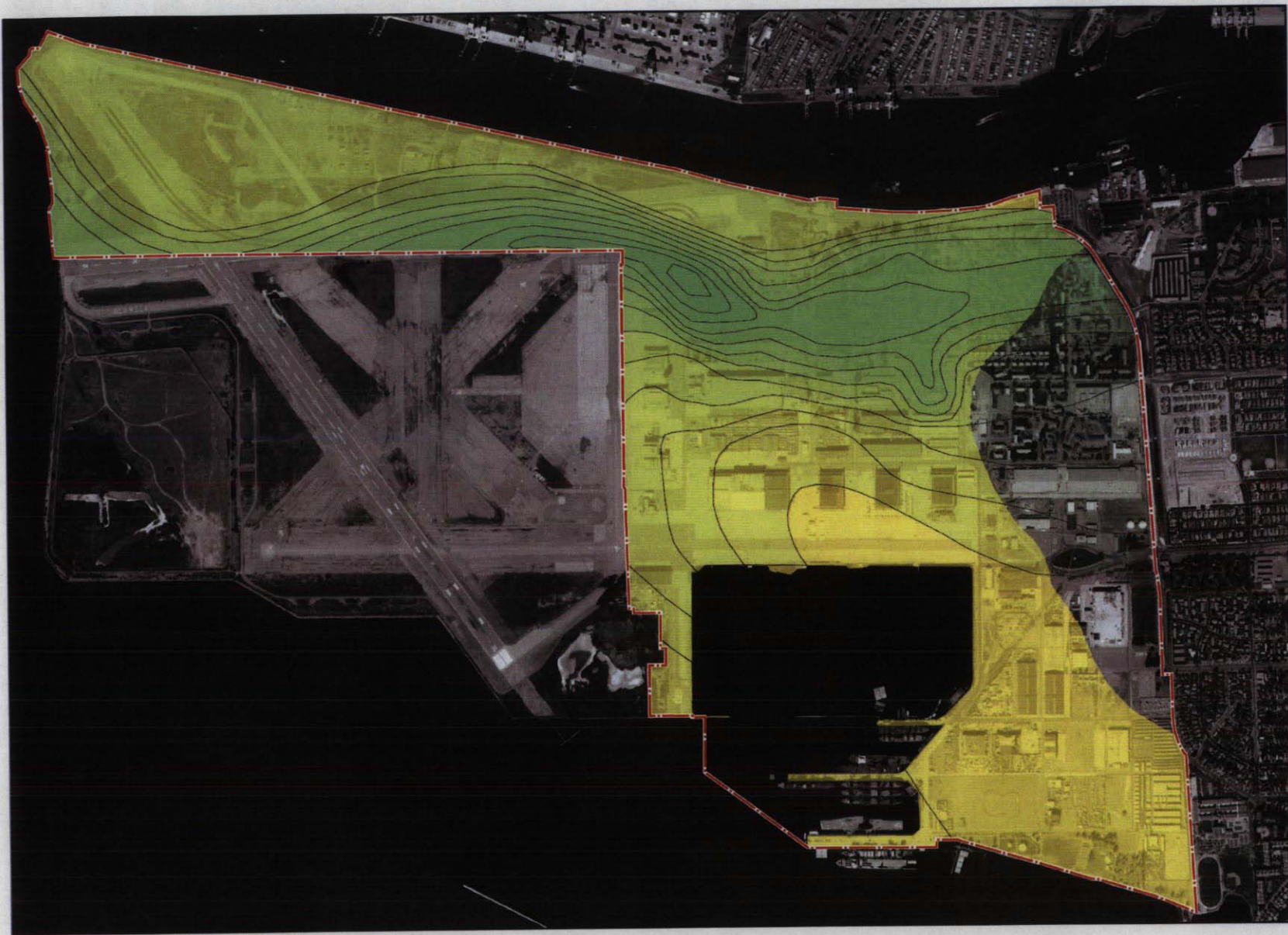
Figure 11-5
Alameda Point Historic Resources



- Plan Area Boundary
- 100-Year Floodplain
- 18" Rise in Sea Level



Figure 11-6
Alameda Point Floodplains and Sea Level Rise





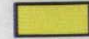
-  Plan Area Boundary
-  Young Bay Mud
-  Area at Risk of Liquefaction



Figure 11-7
Alameda Point Geotechnical Conditions